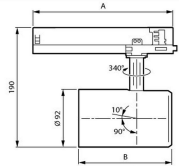


Track	Flux	CCT	Optic	A (mm)
PSU	205	840	HNB/HMB/HVBR/HVBR/HOVL/HHOVL	158
	495	PW930	NB/MB/WB/VVBR/OVL	162
DIA				251
DIA.VLC			All	253
WA				224



Flux	CCT	B (mm)
275	FMT/Rose/R	136
395	FR/p930	149
495		



## Specifications Philips LED Tracklight GreenSpace Evo Projector White 31.5W 4000lm 41x80D - 830 Warm White

[View Product](#)

### General Information

SKU	251906
EAN	8720169590960
Brand	Philips
Manufacturer Name	ST333T 39S/830 PSU WB WH481
Any Lamp all-in warranty	5 Years
Average Lifetime (h)	50000

### Technical Information

Technology	LED Integrated
Voltage (V)	220-240
Dimmable	Not Dimmable
Colour Code	830 Warm White
Colour temperature (Kelvin)	3000 Warm White
Colour Rendering (Ra)	80-89
Colour of Light	White
Light colour options	Single Color
Luminous Efficacy (lm/W)	136
Emergency Lighting	No Emergency Unit
Beam Angle (degree)	41x80
Power factor	>0.90

Product Type Category

LED Trackspot

## Fixture Information

---

Mounting Method	Rail
Operating Temperature	0 to +25
IP-rating	IP20
Impact Protection (IK)	IK02 - 0.20 joule
Housing	Plastic
Colour of the Fixture	White
Colour of material	White

## Dimensions

---

Length (mm)	158
Width (mm)	92
Height (mm)	190

## Sensor Information

---

Type of sensor	No Sensor
----------------	-----------

## Why Any-lamp?



Order from the **largest lighting specialist** in Europe



**Customised** quotation



Up to **7 years warranty**



**Easy** return process